



BOARDS

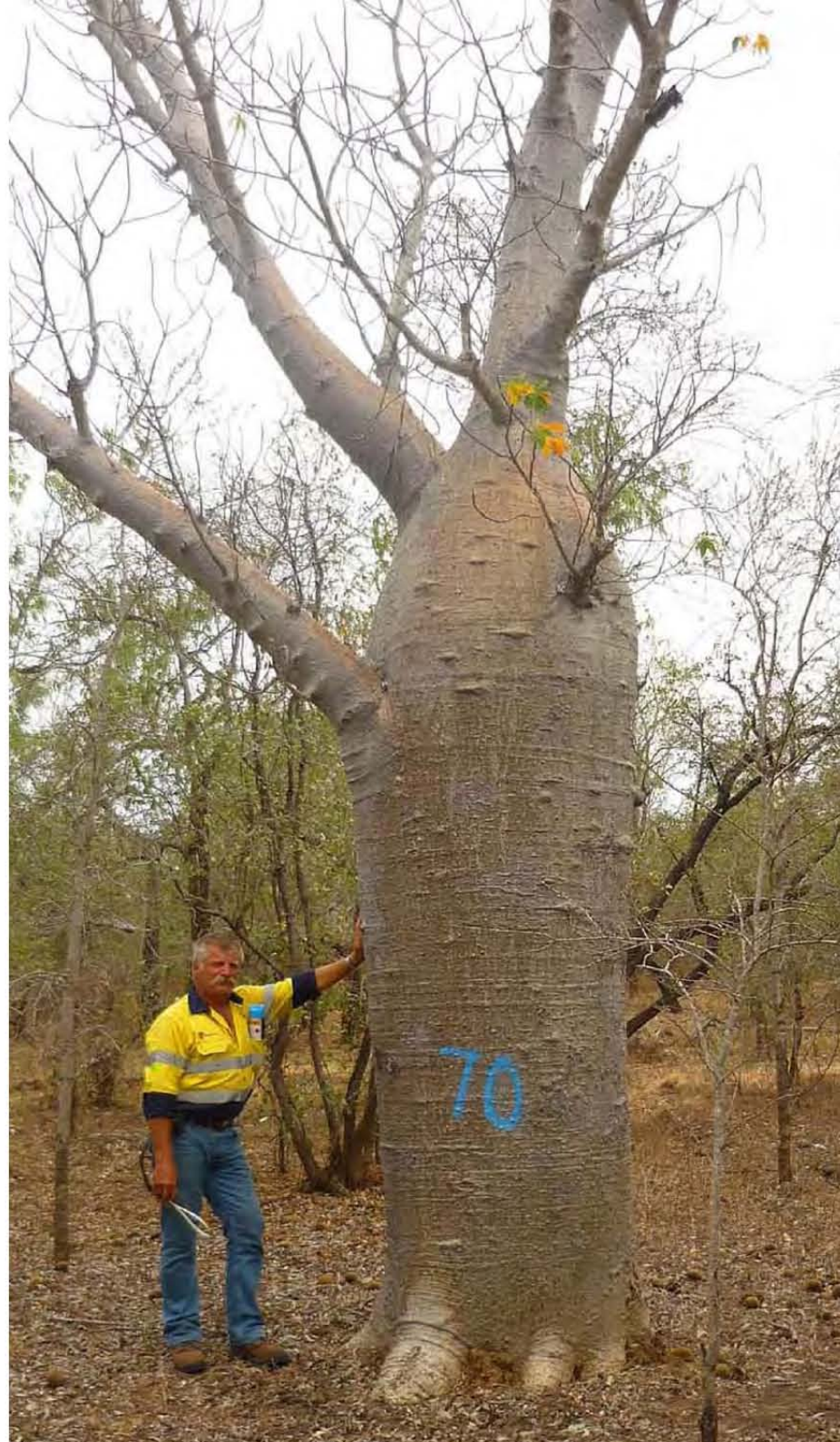


Adansonia gregorii

TAGGING AND HARVESTING

Western Australian Native Plants are controlled by a tagging system, with each harvested tree requiring an official sequentially numbered tag to be purchased from Western Australian Department of Environment and Conservation. This enables the origin of the tree to be traced through to the end user. Cycad International adheres strictly to these conditions. Current Western Australian legislation normally stipulates that No Boab Trees in Western Australia can be salvage harvested. However with the expansion of the Ord Irrigation Channel in Kununurra approval was granted for a select number of Boab trees to be salvaged from land clearing operations, where they would otherwise be destroyed. These trees are now offered for Commercial Sale only from Cycad International. No further trees will be available of this size in the foreseeable future.

Description: The Australian boab tree (*Adansonia gregorii*) is related to the Madagascan and African *Adansonia* species known as baobabs. Baobab trees are ideal for semi desert conditions to equatorial climates and are drought hardy semi-succulents. Large mature semi-succulent Boabs are ideal for Semi Desert and also for Equatorial climates. These water storing trees come from our harsh dry sub-tropical area in The Kimberley Region of Western Australia. The waxy feeling skin/bark of the Boab will adapt to extremely hot sunlight conditions in the dry season when it may shed all of its leaves (depending on whether the tree is growing in dry or moist situations).





Shipments Australia Wide and Worldwide

Location, Care & Handling

We have been exporting plants to parts of Australia as well as to international destinations, by road, sea and airfreight since the early 1990's.

Cycad International is able to provide our reliable plant wholesale solutions to businesses based in Australia and overseas. We have developed a wealth of expertise in the packing, documentation and transportation of plants within Australia and around the world, and strive to ensure that your orders arrive on time, in peak condition, disease-free and in accordance with quarantine and government regulations.

Domestic : Our dedicated plant despatch staff along with our clean quarantine area, and long established relationships with local Quarantine Officers ensures that all shipments are properly prepared and inspected before delivery. Plant Health Certificates are supplied with all shipments. With regular interstate services, delivery is available Australia-wide.

Cycad International recommends full pallet loads where possible to minimise freight costs – our packing strategies effectively maximise all shipping space.

For QLD, NSW, ACT, VIC, TAS, SA & WA plant orders, please allow two weeks for interstate packing and quarantine arrangements. The delivery cost for each order will vary depending upon the size, species, quantity and your location so feel free to contact us for a prompt competitive quotation.

Overseas Shipments/Exports : Our Nursery is a registered Australian Quarantine Inspection facility which means all shipments can be efficiently prepared and inspected before delivery. Plants are always exported with the necessary Quarantine and Environment Documentation (Phytosanitary Certificate, C.I.T.E.S. Export Permits).

Plants and trees can be packed into 20 foot and 40 foot open top sea containers. Aircraft containers and Courier services are used for smaller quantities. Whilst maximum container space is utilised, utmost care is taken to ensure our product arrives at its destination in the best possible condition.





The extreme growing conditions experienced by these amazing Boab trees:-

- They grow in a wide range of soils from deep sandy to clay soils, in rocky habitats in valleys and rocky hills to 1500m+
- In and around freshwater swamps, streams and rivers sometimes with their root systems being submersed in deep water for months on end without any ill effect
- On the edge of brackish water bodies and salt marshes and tidal salt flats just above high tide mark - in some cases receiving salt water inundation during tropical storms and extra high king tides and Cyclones
- They also grow in soils with salt contents higher than most plants can withstand

10 to 12 metres - to fit into sea containers and road trains



Trunk Diameter : 0.5 metre to 1.2 metres



Deciduous



Western Australia



Warm temperate to equatorial - well draining soils





Process for Excavation of Trees through to Export

Example of Tree currently standing in the Ground

Harvest site for trees is approximately 38 kilometres from Kununurra in Western Australia.

There is a Mobilisation and Demobilisation fee to be paid to just get the Excavator to the harvest site. An hourly rate for the use of the Excavator is then charged for the time the machine is working

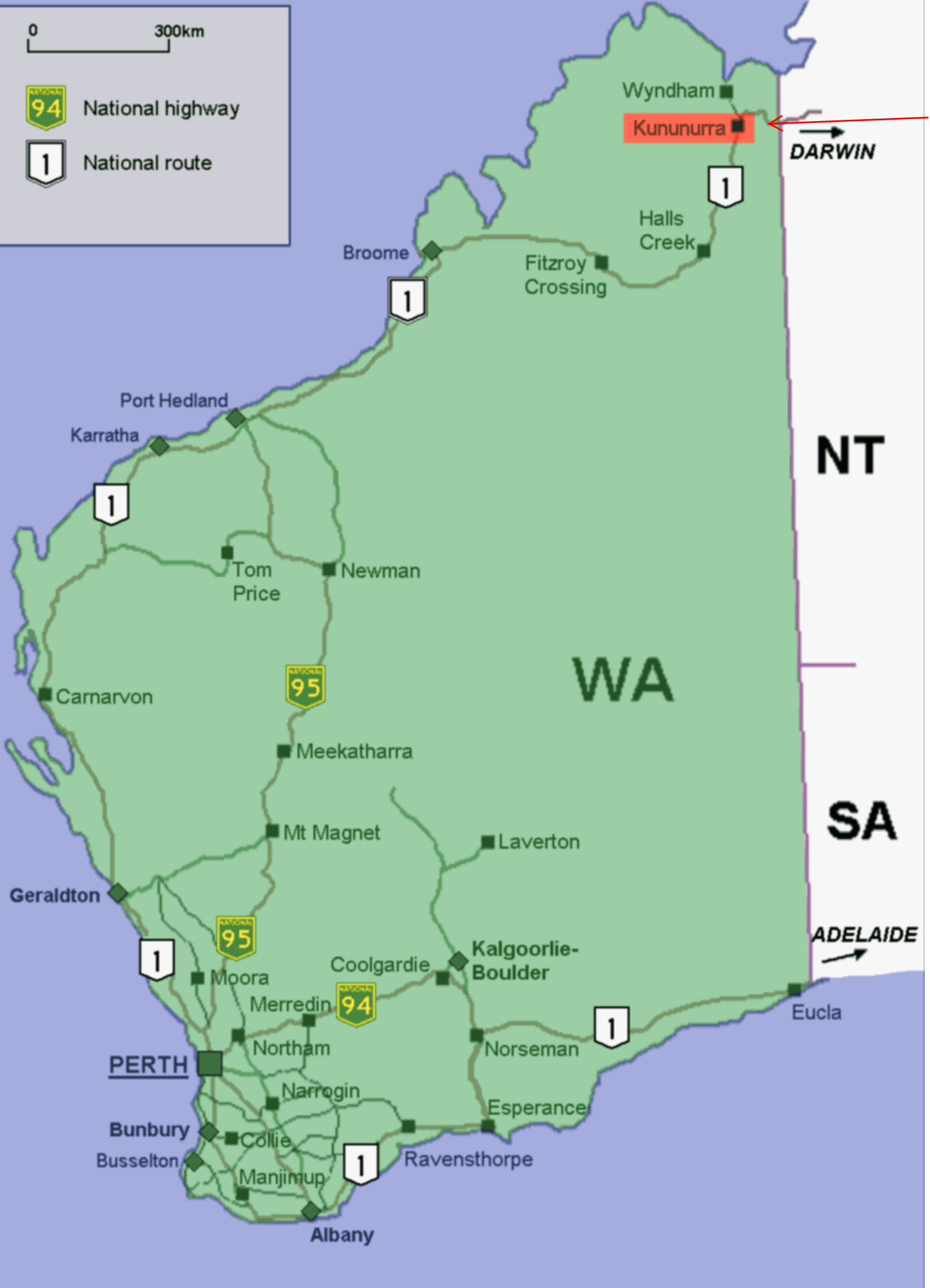
We live in Katherine, Northern Territory.
Kununurra is 550 kms west of Katherine. Travel is
by car & takes 6 hours to harvest site



0 300km

 National highway

 National route





Trees are excavated and lifted





Excavator walks tree from harvest area
to road and loading onto Road Train





One tree per Road Train trailer



Road Train
1 x tree per Trailer x 3 trailers
Travel : 3300 kms from Work Site to Sea Port





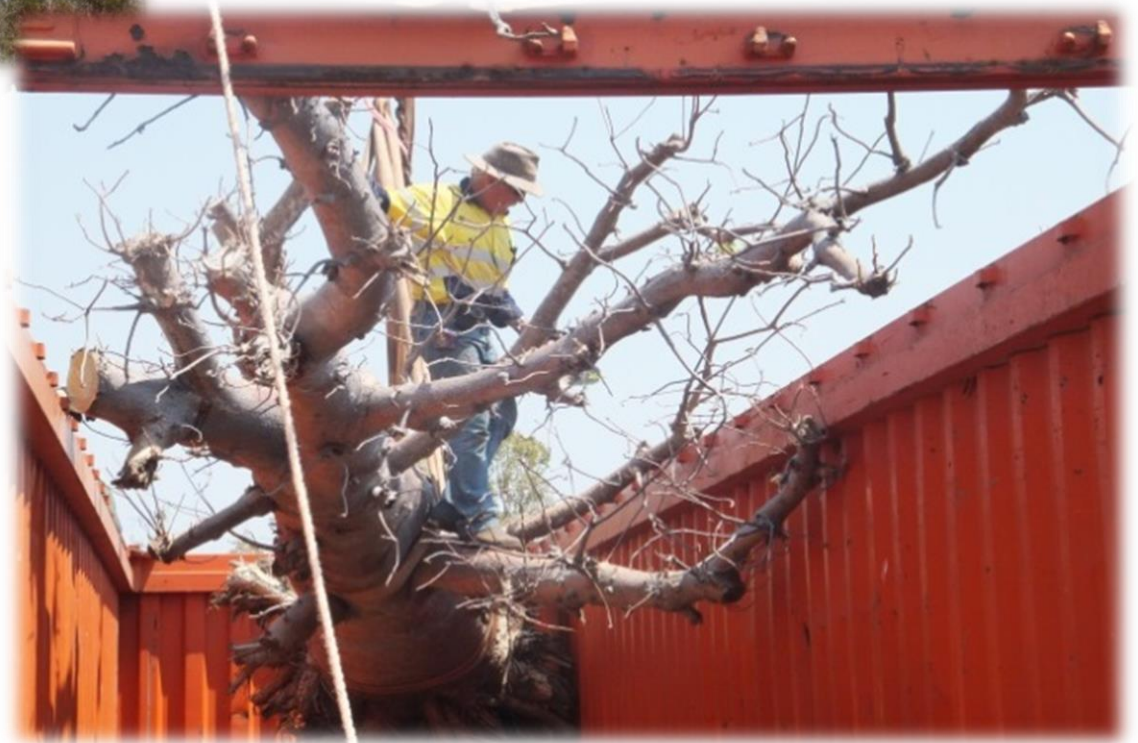
Crane lifts tree from Road Train to allow our Australian Quarantine Inspectors to carry out inspection of tree & issue Phytosanitary Certificate for export



Crane lifts tree and swings into place over the open top container



Care has to be taken when placing tree into sea container to ensure branches are not damaged and tree can be secured for the sea voyage



Shade cloth covers put over the open top container and loaded on to sea vessel

